



CASCADE
ASSET MANAGEMENT, LLC

Technology Equipment Retirement Specialists

GREEN BUILDING

Green Building Elements
2005 - Madison Headquarters



CASCADE
ASSET MANAGEMENT, LLC
Technology Equipment Retirement Specialists

Site Selection and Development



- Our new location's close proximity to the interstate accommodates shipping to reduce fuel consumption and emissions.
- The new site was selected, in part, by plotting our current employee addresses to ensure a central location near affordable housing developments.
- No fill dirt was added or removed from the site, thereby reducing transport and site disturbance.
- Rocks used in landscaping were excavated from the site.
- Water from the roof and parking area is filtered through our rain garden to prevent runoff and erosion, and to prevent contaminants from entering the stormwater system.
- Our rain garden and lot feature native plantings that are drought resistant and require little maintenance.
- "Low-mow" varieties of grass require less frequent cutting, thus reducing energy use and pollution.
- The orientation of the loading docks toward the south takes advantage of the sun's warming rays during the winter to reduce the amount of salt needed to melt snow and ice.



CASCADE
ASSET MANAGEMENT, LLC
Technology Equipment Retirement Specialists

Construction Materials and Resources

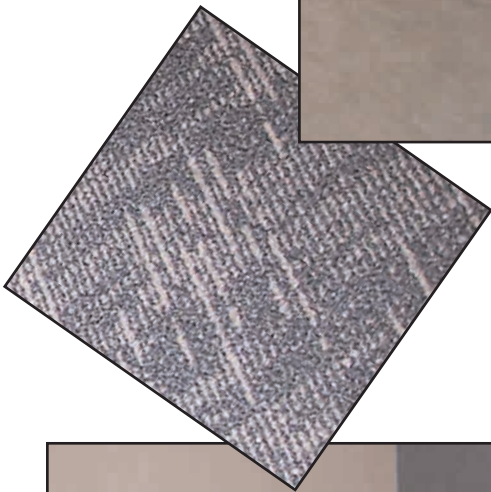
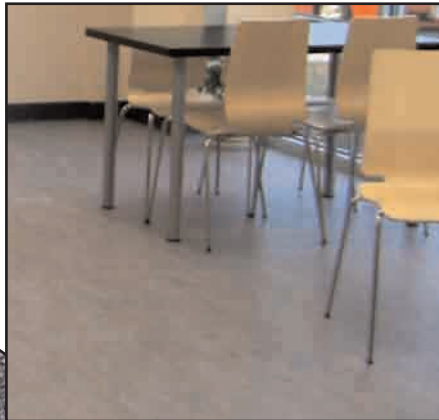
- Inert, recycled-content, recyclable materials from local sources were used in the construction of 25% of the new building.
- Twelve inch thick concrete walls with insulated core reduce heat transfer and increase energy efficiency.
- The steel framing in the office walls is recycled, long lasting, and able to be recycled again in the future.
- The open layout minimizes material usage while maximizing available space.
- The concrete slab foundation contains 10% recycled fly ash, resulting in a durable and lighter material, and diverting the ash from landfills.
- Seals on the dock doors reduce heat loss.
- Low VOC paint used throughout reduces harmful airborne chemicals within the building.
- The building's ballasted roof with white gravel reduces the "heat island" effect.
- Construction waste and debris was reduced through design, planning, and diverting metal, cardboard, and wood waste to recycling markets.





CASCADE
ASSET MANAGEMENT, LLC
Technology Equipment Retirement Specialists

Furnishings and Fixtures



- The carpet in the offices contains 20% recycled content.
- The carpet tiles in the education room are 100% post consumer reused and recycled.
- Linoleum made from natural linseed oil, wood and cork is used as flooring in the break room and hallway.
- The systems furniture includes refurbished (structure and binder bins) and recycled content (fabric and panels) materials.
- The conference table and cubicle work surfaces are made from 100% post consumer wheatboard (e.g., cornhusks.)
- The old workbenches from our last facility were given a new life and reconfigured our refurbishing department to conserve resources and avoid disposal.
- Appliances in the break room have received the "Energy Star" approval for high efficiency.





Energy and Atmosphere

- The heating and air-conditioning system installed in the offices is 40% more efficient than standard models.
- Four zones of temperature control in the office are managed by “smart” programmable thermostats.
- Radiant gas heat in the warehouse warms objects rather than the air, thereby increasing comfort and reducing energy use.
- The warehouse ventilation system is designed to quickly cool the processing area by taking advantage of the prevailing summer breeze.
- T-5 compact fluorescent fixtures with reflectors and dimmers provide efficient lighting in the office and use up to two thirds less energy than standard T-8 fixtures.
- Other compact fluorescent fixtures with occupancy sensors are installed throughout the building to minimize electricity usage.
- Natural light supplements or replaces the need for electric lights during the day and enhances the quality of the work environment.
- Cascade’s goal is to purchase and install photovoltaic solar panels to offset some of our electricity consumption in the future.





CASCADE
ASSET MANAGEMENT, LLC
Technology Equipment Retirement Specialists

Other Building Features



- Workstations and tools were redesigned based on worker suggestions to increase comfort and efficiency.
- Our new energy efficient baler produces denser bales of plastic requiring fewer trips to market.
- The addition of a steel compactor allows us to compress metal into a hopper and reduce the number of pickups by 67%.
- Windows in the warehouse, along with white paint on the walls and ceiling, reduce energy consumption and positively influence working environment.
- Outdoor lighting is designed to reduce light pollution by shielding parking lot lights and choosing not to illuminate our outdoor sign.



Green Building Elements

2005 - Madison Headquarters



Pellitteri Waste Systems

Tim Bolhuis

The Bruce Company

Steve Short

Noyce Painting

Rob Noyce

Sergenian's Flooring

Dick Eddy

American Heating and A/C

Dennis Ruchti

Schultz Electric

Jerry Schultz

Jason L. Bollig

Project Manager

Ideal Builders, Inc.

Office: 608.271.8111

Fax: 608.271.6233

Web Address: www.idealbuildersinc.com